



Concept visualisation looking west along Market Place  
© Arup

# MARKET PLACE CONCEPT

*The transformation will seek to establish Market Place as a tranquil and green pedestrian oasis.*

## AIMS

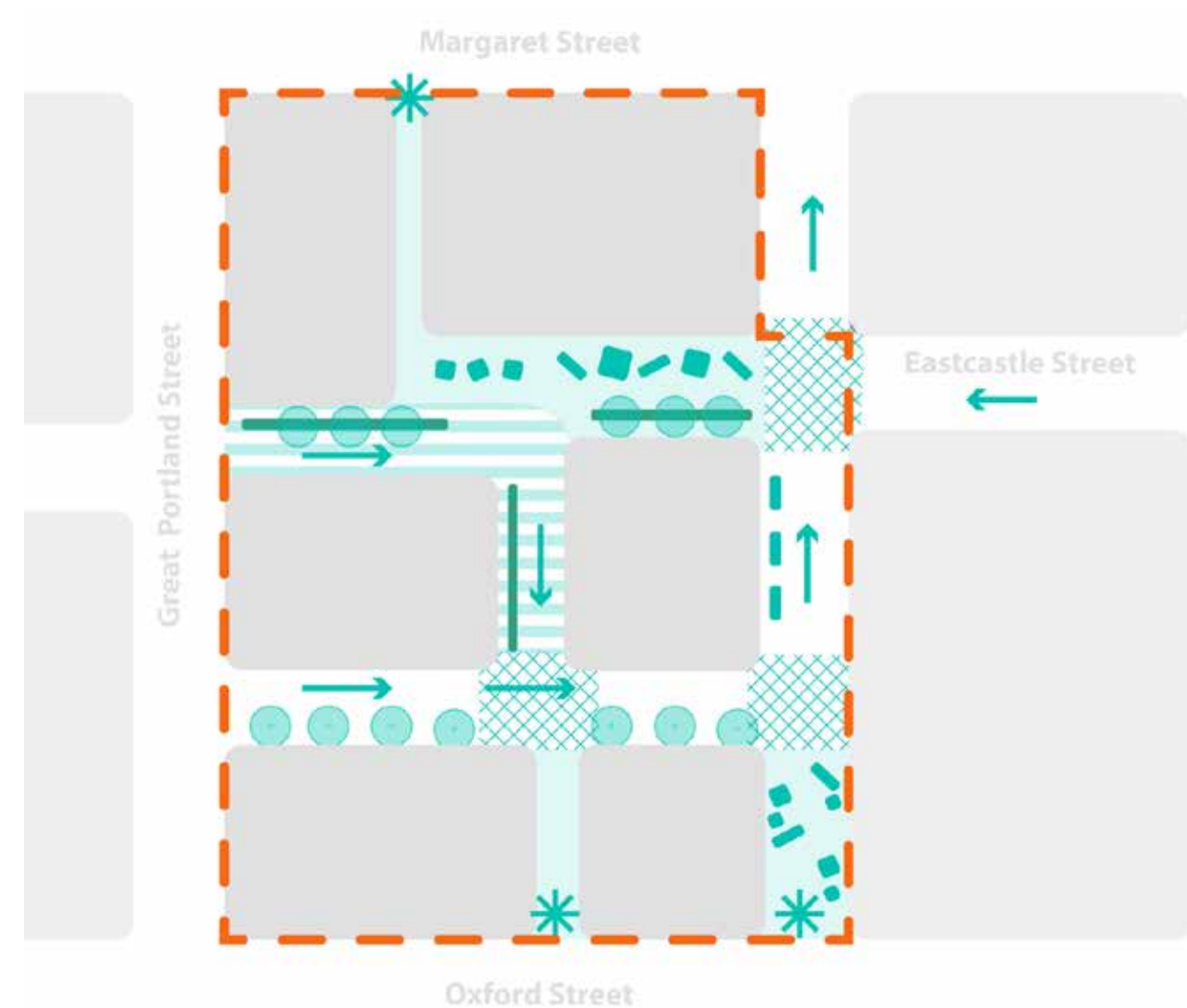
- Create an exemplar public space for local residents, workers and visitors in the heart of the West End.
- Promote a diversity of people friendly uses and activities.
- Provide resilience through the capture and re-use rainwater from the street and adjacent buildings.
- Encourage walking through the creation of a safe, pedestrian orientated environment.
- Introduce spaces for people to dwell, promoting social cohesion and well-being.
- Increase biodiversity and the provision of habitat for wildlife through the addition of more planting.
- Improve air quality through vehicle reduction.

## KEY MOVES

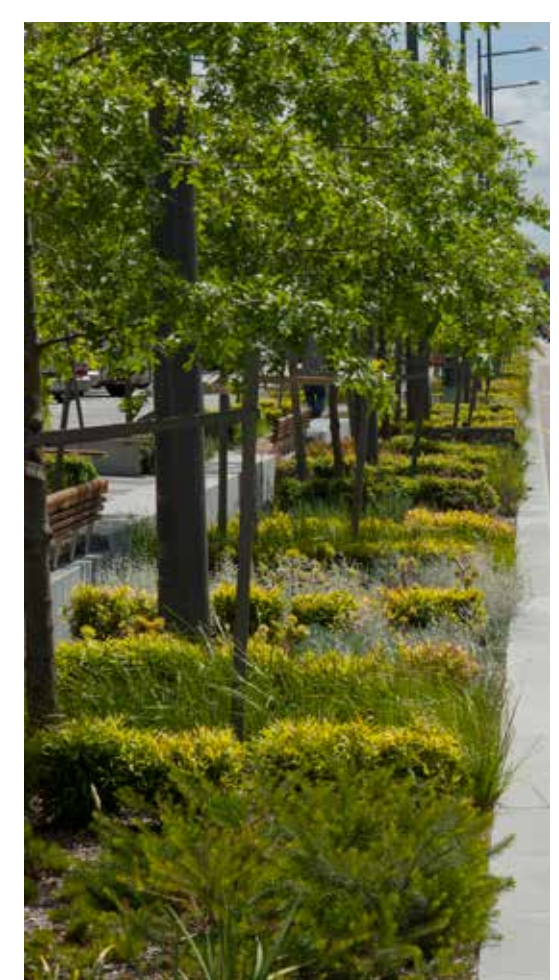
1. Create a pedestrian only zone by closing the northern section of Market Place to traffic and implement timed road closures to the eastern section of Great Castle Street.
2. Resurface the roads and implement a cohesive family of street furniture and materials to create a high quality environment that enhances local character and provides a sense of identity.
3. Introduce new opportunities for people to stop and enjoy the space through the provision of seating.
4. Use art and lighting interventions within Market Court and Margaret Court to draw people from Oxford Street into the area.
5. Improve site-wide greening and climate resilience by introducing new trees, planting and sustainable drainage.
6. Implement traffic calming measures at road junctions to reduce traffic speeds and promote pedestrian priority within the area.
7. Design and layout is subject to site surveys and traffic modelling.

### Legend

- |                          |                           |
|--------------------------|---------------------------|
| One-way traffic          | Planters and seating      |
| Pedestrian               | Gateway feature           |
| Timed road closures      | Street tree opportunities |
| Traffic calming measures | Planting opportunities    |



Precedent image showing tree lined streets and integrated seating  
© Martin Saunders Photography



Precedent image showing seating integrated with planter  
©Latz+Partner Stalwart Films



Precedent image showing sustainable drainage rain water capture  
© Martin Saunders Photography